



15
YEARS
AT THE TOP

SDR[®] flow+ Bulk Fill Flowable

Procedurally versatile. Clinically accomplished.

 Dentsply
Sirona

The unmatched SDR® bulk fill technology

In 2009, SureFil® SDR® flow material with SDR® technology was the first product that allowed 4mm bulk placement in flowable consistency. More than 135 million applications and several long-term clinical studies later, it is the bulk fill technology of choice for faster and easier creation of reliable Class I and Class II restorations. SDR technology answers the two challenges of Class I and Class II: Adaptation and efficiency.

Successful adaptation

Studies indicate that marginal gaps can lead to the development of wall lesions and can result in secondary caries¹, ultimately putting restoration longevity at risk.

- **voids and gaps between restoration and cavity walls directly influence secondary caries formation¹**
- **Improper adaptation of composite during placement can lead to the formation of voids²**
- **High shrinkage stress may lead to marginal gap formation²**

Flowability

SDR® flow+ material's exclusive chemistry helps ensure the longevity and overall quality of a bulk fill restoration, flowing deeply into nooks and crannies to provide excellent cavity adaptation during placement.



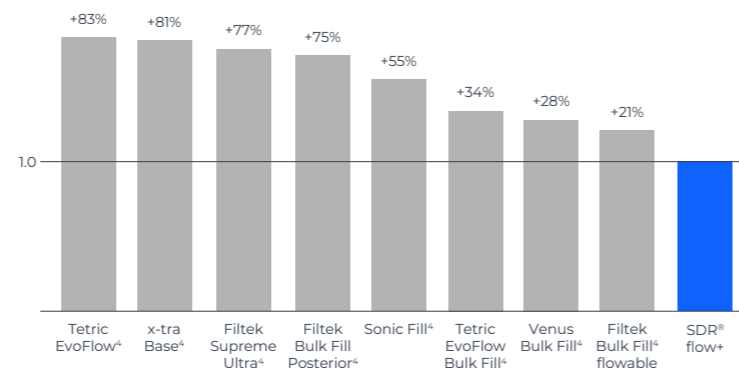
Proven performance

Dentsply Sirona created the bulk fill flowable category in 2009 with SureFil SDR flow material. The next generation, SDR® flow+ material, enhanced its formula to allow use in an expanded range of indications while also offering more shades, greater wear resistance, and increased radiopacity.

Low shrinkage stress

SDR® technology minimizes the stress as resin monomers form the polymer matrix. This reduces the risk of gap formation through stress and contributes to excellent adaptation even in 4mm bulk placement.

Shrinkage stress: Shown as a ratio of SDR® flow+ material vs. competitors³



Cost-saving efficiency

Direct restorations represent approximately a third of the annual revenue of a general dentist. Increasing the efficiency of the Class II treatment directly impacts day-to-day dental office revenue.^{5,6} SDR® bulk fill technology allows the bulk fill material to be applied in 4mm increments without an additional liner. This automatically decreases procedural time and inventory.

- **Self-levels for up to 40% time savings over classic layering technique**
- **No additional liner required**
- **Self-levels with no additional manipulation**



SDR® flow+ procedure

- Bonding
- ① SDR® flow+
- ② Capping Layer: Universal composite

Conventional procedure

- Bonding
- ① Flowable Liner
- ② Increment 1: Universal composite
- ③ Increment 2: Universal composite
- ④ Increment 3: Universal composite

¹ Kuper NK, Opdam NJ, Ruben JL, de Soet JJ, Cenci MS, Bronkhorst EM, et al. Gap size and wall lesion development next to composite. J Dent Res 2014;93, 1085-135

² Nedeljkovic et al. Is secondary caries with composites a material-based problem? Dent Mater 31 (2015), e247-e277

³ Low Stress vs. Competitors Internal Report. Data on file. For more information, contact Consumables-Data-Requests@dentsplysirona.com

⁴ Not a registered trademark of Dentsply Sirona

⁵ 2010 Survey of Dental Practice - Income from the Private Practice of Dentistry. <http://www.ada.org/1444.aspx>

⁶ American Dental Association Procedure Recap Report (2006)

How do you make SDR® even better? Make it more versatile.

SDR® flow+ covers a wide range of indications and three A-shades in addition to Universal.

More shades than the original SureFil SDR® flow material

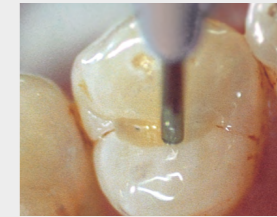
Four shades, including universal, A1, A2, and A3 increases the versatility even further in a wide range of cases including visible Class II restorations, primary posterior dentition, and the Class III and Class V restorations.



Expanded range of indications

Due to its unique chemistry and improved wear resistance, SDR® flow+ material is approved to be used in Class III and Class V restorations where a capping agent wouldn't be used. This allows you to include a variety of restoration classes.

Additional opportunities to use SDR® flow+ material



Pit & Fissure Sealing

The thin compula allows the material to flow easily into all fissures for highly precise application.

Dentsply Sirona internal picture



Core Build-Up

The 4mm depth of cure of SDR® flow+ material make it a fast and easy alternative for core build-up. It handles instrumentation and shaping with ease.

Dr. van der Vyver

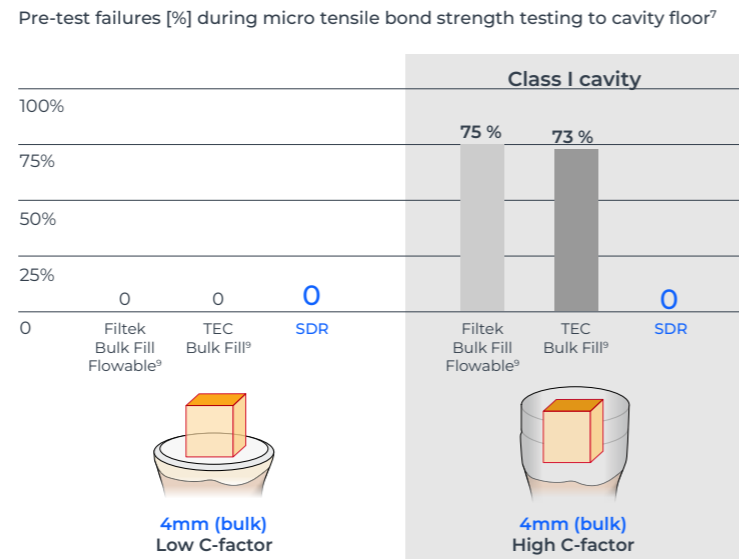


Reliable adhesion and tight seal in high C-factor cavities.

Reliable adhesion

Endodontic cavities are particularly challenging for bulk fill composites, as most are very deep Class I like cavities. This maximizes shrinkage stress potential, indicated by a high C-factor. Studies indicate that when high-C-factor cavities are filled in bulk, the choice of the composite is an important element to avoiding adhesive debonding.⁷

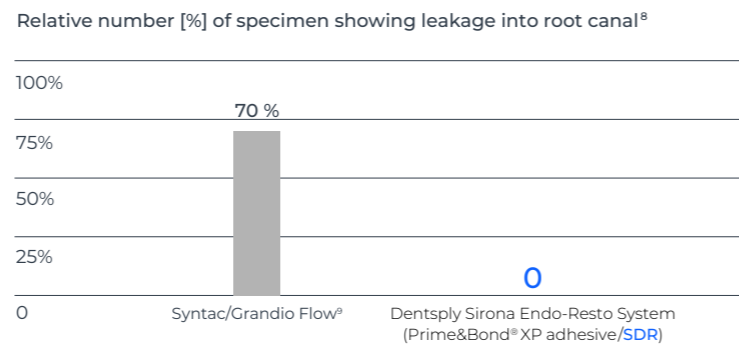
SDR[®] flow+ material with SDR[®] technology can deal with high C-factor cavities leading to a tight coronal seal even for post-endodontic cavities.



Tight seal

“SDR flow+ material ensures a tight seal of the endodontic access cavity – an important factor for long-term endodontic treatment success.”

Prof. Dr. Schirrmeyer,
University of Freiburg, Germany



Years of clinical success.

While making Class I and Class II restorations faster and easier, the SDR[®] technology in SDR[®] flow+ material also shows excellent long-term reliability in several clinical studies. In fact, the long-term survival rates of bulk fill restorations with SDR[®] technology provided to be equivalent to those of restorations done in the conventional layering technique.

Split mouth studies by J.W.V van Dijken and U. Pallesen^{10,11}

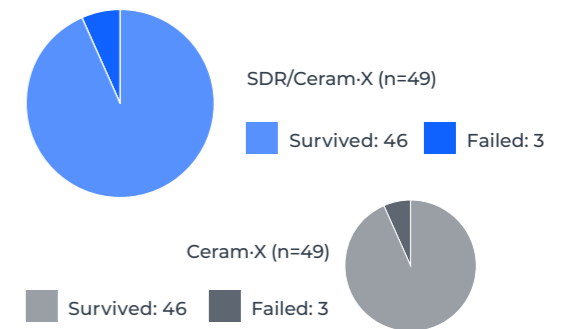
6-YEAR FOLLOW-UP¹⁰

JWV van Dijken and U. Pallesen

A total of 98 Class I and Class II restorations were evaluated at recall. 49 using SDR and Ceram-X[®] universal composite in the bulk-fill technique against the same number using just Ceram-X universal composite in the layering technique.

The observers conclude:

- Clinically safe
- Highly acceptable clinical durability
- Clinical performance and failure rate was equivalent to conventional layering (3 restorations each)



“During the six year follow up, the bulk fill technique was proven to be a clinically safe technique; highly acceptable; clinically durable.”

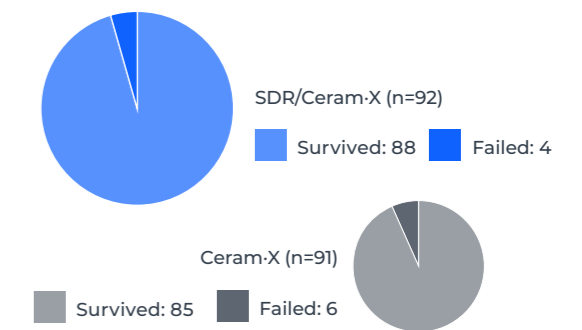
5-YEAR FOLLOW-UP¹¹

JWV van Dijken and U. Pallesen

A total of 183 Class I and Class II restorations were evaluated at recall. 92 using SDR and Ceram-X universal composite in the bulk-fill technique against 91 using just Ceram-X universal composite in the layering technique.

The observers conclude:

- Both restorative techniques showed good surface, marginal stability and color stability
- No statistically different annual failure rates between bulk-fill and layering technique were observed
- No post-op sensitivities have been observed at all



“The use of a 4mm incremental technique with the flowable bulk-fill resin composite showed during the 5-year follow up slightly better, but not statistical significant, durability compared to the conventional 2mm layering technique in posterior resin composite restorations.”¹¹

36-month clinical trial results¹² J. Burgess and C. Munoz

- No failures attributable to SureFil[®] SDR[®] flow material
- No post-operative sensitivities
- No adverse effects on gingiva in contact with SureFil[®] SDR[®] flow material

“There were no observations of recurrent caries associated with the low stress resin and no reports of adverse events throughout the duration of the trial.”¹²

⁷ Van Ende A et al., 2016. Effect of Bulk-filling on the bonding efficacy in Occlusal Class I Cavities. J Adhes Dent; 18(2):119-24

⁸ Internal Report Ebert J, Study No 14 1408 (2011). Data on file. For more information, contact Consumables-Data-Requests@dentsplysirona.com

⁹ Not a registered trademark of Dentsply Sirona

¹⁰ van Dijken JWV, Pallesen U, 2017: Bulk-filled posterior resin restorations based on stress-decreasing resin technology: a randomized, controlled 6-year evaluation; Eur J Oral Sci. 2017 Aug;125(4):303-309.

¹¹ van Dijken JWV, Pallesen U, 2016: Posterior bulk-filled resin composite restorations: A 5-year randomized controlled clinical study; J Dent 2016 Aug;51:29-35

¹² Internal report #765-540 (2012-02-17). Data on file. For more information, contact Consumables-Data-Requests@dentsplysirona.com

Integral to Class II Procedural Success



Palodent® V3 Sectional Matrix System

- Adapts to the natural contour of the tooth
- Creates predictable, accurate contacts and a tight gingival seal
- Can be configured for multiple restorations at once



Prime&Bond active® Universal Dental Adhesive

- Versatility for use with all etching methods, all indications
- Self-spreading — less pooling and dry spots
- Active moisture control for reliable performance on over-wet and over-dry dentin
- Virtually no post-operative sensitivity



SmartLite® Pro LED Curing Light

- Multi-functional modular device in an all-metal housing
- Interchangeable tips for a variety of clinical indications
- Large 10mm active curing diameter to cover bigger restorations

SDR® flow+ Bulk Fill Flowable

Ordering Information



Compula® Tips

SDR® flow+ Intro Kit with Prime&Bond active 60603032

45 Compula® Tips - Universal Shade
Compules® Tips Gun
2.5 ml Prime&Bond® active Adhesive
CliXDish™ Mixing Well
Storage Box

SDR® flow+ Compula® Tips Refill

15 Compula® Tips (0.25g each)

Universal Shade

A1 Shade 60603040
A2 Shade 60603041
A3 Shade 60603042
60603043

SDR® flow+ Compula® Tips Eco Refill 60603033

50 Compula® Tips - Universal Shade (0.25g each)



Syringes

SDR® flow+ Syringe Refill Universal Shade 61C130G

2x Syringe Universal shade (1g each)
15x Syringe tips

SDR® flow+ Syringe Eco Refill Universal Shade 60603050

10x Syringe Universal shade (1g each)
60x Syringe tips

SDR® flow+ Syringe Tip Refill

60x Syringe tip 61C111G

DENTSPLY DeTrey GmbH
De-Trey-Str. 1
78467 Konstanz
GERMANY
www.dentsply.eu
Phone +49 (0)7531 583-0

ML1C0004B A4 (R 6/17/25)

©2025 Dentsply Sirona. All rights reserved.

