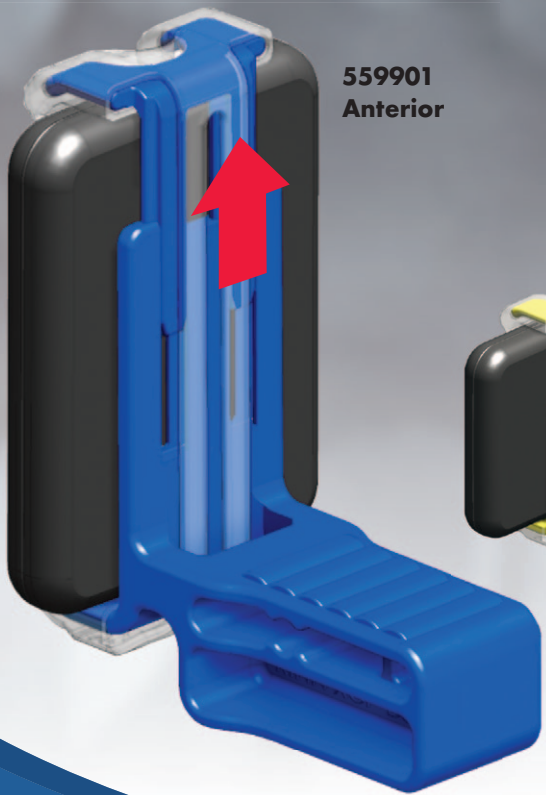


# Universal design. Custom FIT.

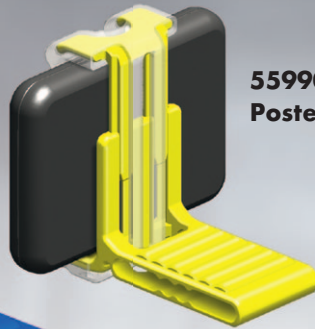
The self-adjusting clip stretches to fit your sensor!



559901  
Anterior



559905  
Endo



559902  
Posterior



559903  
Horizontal Bitewing

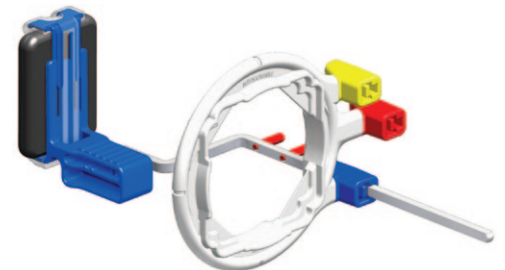


559904  
Vertical Bitewing

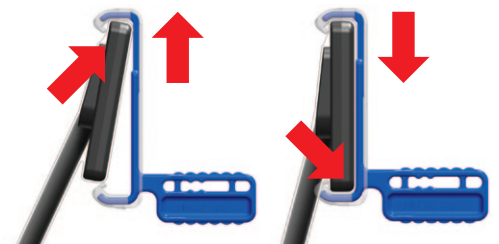
## XCP-DS FIT™

### Universal Sensor Holder

- Flexible – works with all sensor brands, size 1 and 2
- Color coded – for fast assembly
- Soft silicone components – for increased patient comfort and sensor protection
- 100 % compatible with XCP Ora and XCP DS arms and rings
- Autoclavable



XCP-DS FIT with XCP-ORA 3-in-1 Positioner



The biteblock stretches – makes assembly easy

For better dentistry

**DENTSPLY**

## ReOrder Information

**R559900 XCP-DS FIT Kit**  
with XCP-ORA (1 x XCP-Ora, 2 each holder  
XCP DS Fit anterior/posterior/bitewing)

**R559901 XCP-DS FIT Anterior (2)**



**R559902 XCP-DS FIT Posterior (2)**

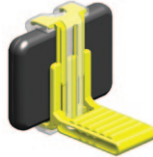


**R559903 XCP-DS FIT Horizontal Bitewing (2)**

**R559904 XCP-DS FIT Vertical Bitewing (2)**



**R559905 XCP-DS FIT Endo (2)**



**R559908 XCP-DS FIT Endo Kit**  
Endo-Green Ring, Endo Arm, 2 Endo Holders

**R559909 XCP-DS FIT Complete- Kit**  
with XCP Ora and Endo Kit

## Get more done with ONE!

The XCP-ORA™ One Ring & Arm Positioning System reduces the components needed to accurately position radiographic media with RINN XCP® or XCP-DS® biteblocks to just one ring, one arm.

- **For film and sensors**
- **Autoclavable** for low cost-per-use
- **Lightweight construction** helps patients maintain positioning
- **Patent-pending Ring & Arm design** simplifies your positioning procedure with less parts

**R550771 XCP-ORA Ring & Arm, 1-pack**

**R550772 XCP-ORA Ring & Arm, 2-pack**

