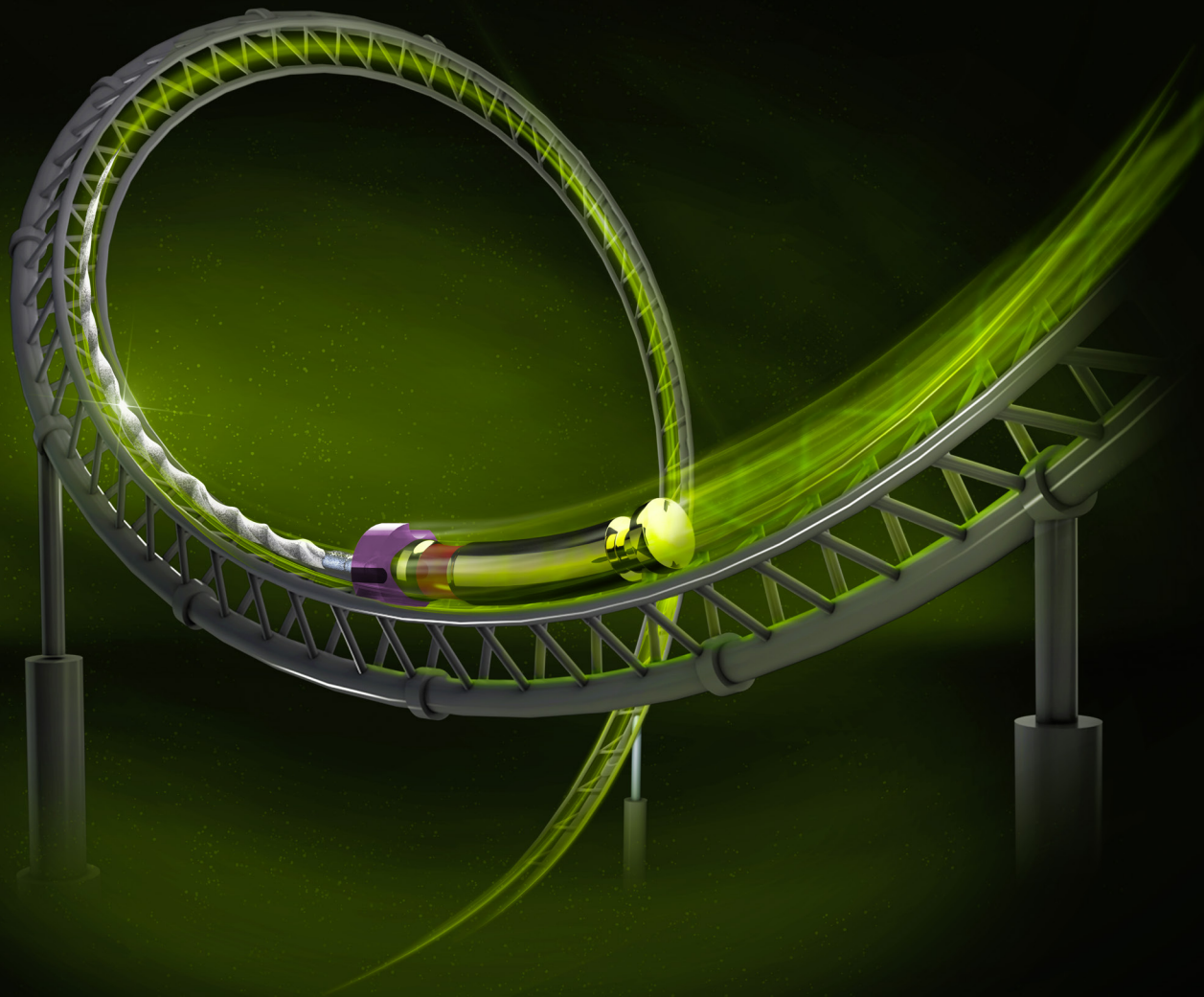


THE INNOVATIVE NITI FILE GENERATION

HyFlex EDM



Stays on track

 COLTENE

HyFlex EDM

Electrical Discharge Machining

The HyFlex EDM files constitute the 5th generation root canal files. HyFlex EDM NiTi files have completely new properties due to their innovative manufacturing process using electric discharge machining.

This creates the unique surface of the new NiTi files and makes the HyFlex EDM files durable and more fracture resistant. This entirely unique combination of flexibility and fracture resistance makes it possible to reduce the number of files required for cleaning and shaping during root canal treatments without having to compromise preservation of the root canal anatomy.

Just like HyFlex CM files, HyFlex EDM files have the already familiar **Controlled Memory** effect (CM). They are manufactured utilising a unique process in which the crystallographic phase transitions from austenite to martensite at room temperature in contrast to conventional NiTi files, making the files extremely flexible, fracture resistant and able to regenerate multiple times.

- Designed for successful centered canal preparation
- Multiple regeneration and reuse
- Specially hardened for safer application
- High flexibility
- Extreme resistance to fracture



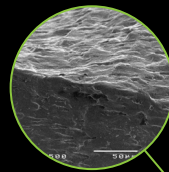
Pre-Sterile

for safer application



High Fracture resistance

Uniquely hardened surface reduces risk of file separation



Cutting Efficiency

Hardened surface plus controlled memory improves cutting efficiency



Highly Flexible

Controlled memory allows high flexibility and bendability



Variable Cross Section Design

Contributes to high breakage resistance

Triangular cross section at top

Trapezoidal cross section in middle

Quadratic cross section at tip

Clinical Case by Dr. Gianluca Fumei

The HyFlex EDM system also convinced the endo specialists in a practice test with its outstanding flexibility and break resistance. They recommend HyFlex EDM files as a file system with which both simple and complex canals – can be prepared quickly and reliably – even with a reduced number of files.

Controlled Memory

Pre-bentable for extremely curved canals

Due to the controlled memory, the files always follow the anatomy of the canal, thus significantly reducing the risk of ledging, transportation or perforation of a canal. Like stainless steel files, the HyFlex EDM files can be pre-bent.

This is a crucial advantage in extremely curved root canals to avoid the creation of steps.

Up to 1.200 % higher fracture resistance

Studies have shown that HyFlex EDM files are more than 1.200 % more resistant to fatigue then competitor's products.

Visual control after thermal treatment



✓ Ready for safe reuse

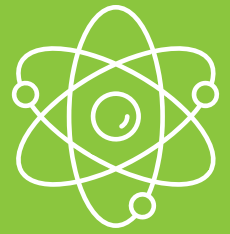


✗ Untwisted (discard)

HyFlex EDM NiTi have a built-in shape memory. They prevent stress during preparation by changing their spiral shape regain after heat treatment. An autoclaving process is enough to return the files to their original shape and to regenerate the crystal structures and resistance to fatigue.

Should the file fail to regain its shape after heat treatment, it is plastically deformed, thus increasing the risk of fracture. It should not be used after visual inspection. The number of reuses, is higher than that of conventional NiTi files.

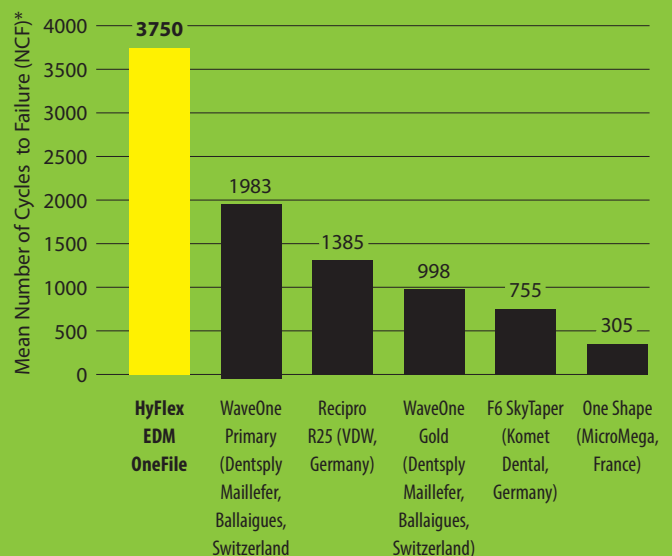
Clinical Studies



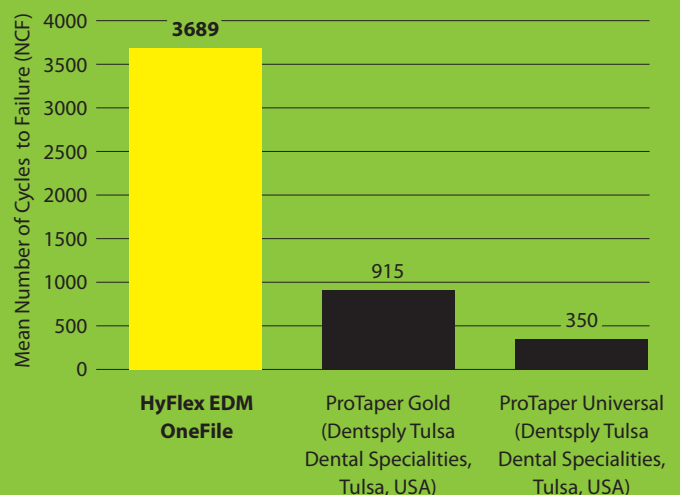
In studies, the HyFlex EDM OneFile demonstrated a significantly higher fatigue resistance than other nickel-titanium rotary files with various alloy properties.

Number of cycles to failure (NCF)

Studies Prof. Eugenio Pedullà, University Catania, Italy ^{1, 2}



Study Dr. Mehmet Emin Kaval ³



* The Number to Cycles to Failure (NCF) was calculated by multiplying the time to failure and the rpm used.

¹ Pedullà E et al. Influence of proper or reciprocating optimum torque reverse kinematics on cyclic fatigue of four single files. J Investig Clin Dent. 2019 Aug;10(3):e12409.

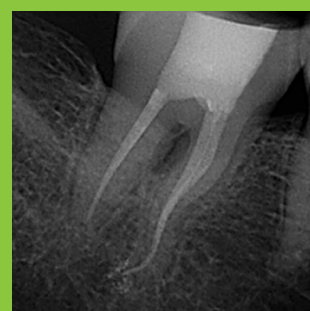
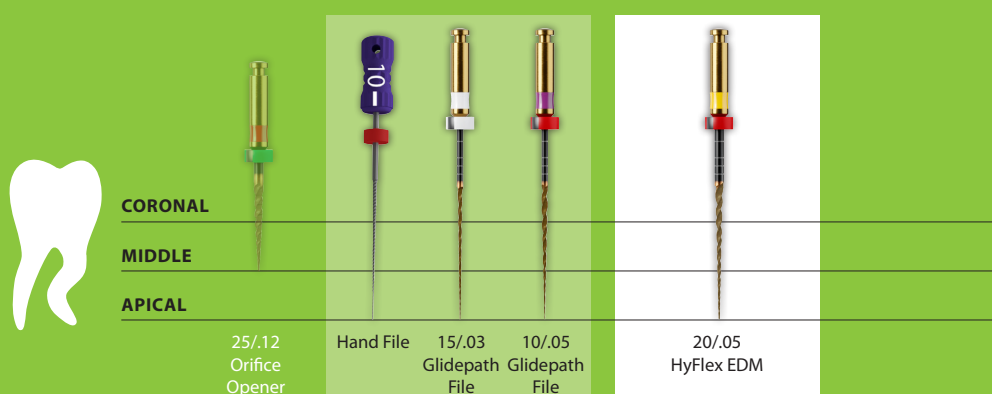
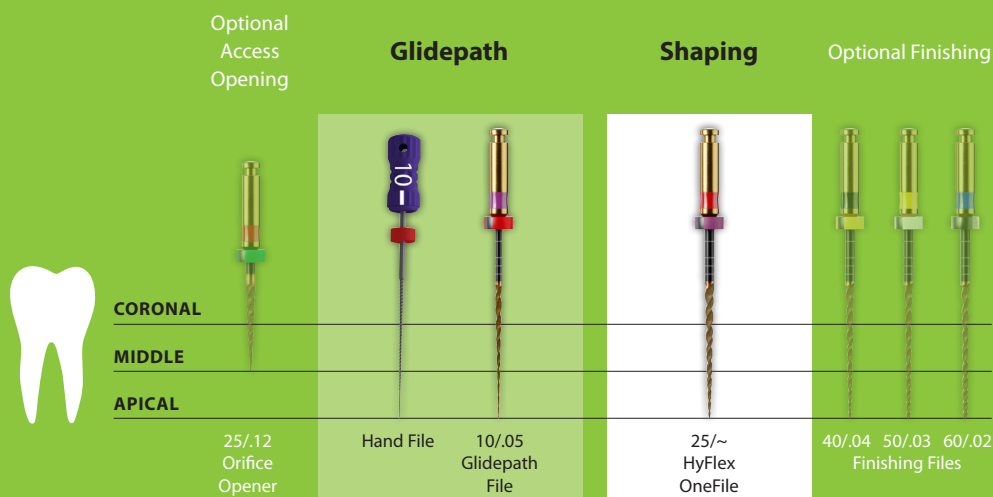
² Pedulla E et al. Influence of Continuous or Reciprocating Optimum Torque Reverse Motion on Cyclic Fatigue Resistance of Two Single-File Nickel-Titanium Rotary Instruments. Eur Endod J. 2017 Aug 22;2(1):1-6.

³ Kaval ME et al. Evaluation of the Cyclic Fatigue and Torsional Resistance of Novel Nickel-Titanium Rotary Files with Various Alloy Properties. J Endod. 2016 Dec;42(12):1840-1843.

Reduced Number of Files

The use of HyFlex EDM files allows the reduction of the number of files. In small, straight canals the usage of the HyFlex OneFile can be enough. Depending on the clinical situation the number of files can be reduced or expanded. All HyFlex EDM NiTi Files should

be used at 400 rpm and at a torque of up to 2.5 Ncm (25 mNm) excepted the Glidepath files which should be used with 300 rpm and at a torque of up to 1.8 Ncm (18 mNm).





HyFlex EDM Paper and Guttapercha Points

- Precise fit
- Colour-coded
- Highest quality

For drying and filling, the successful HyFlex system also offers paper and gutta-percha points ideally matched to the proven nickel-titanium files.

With the aid of the ROEKO GuttaFlow bioseal obturation material, the root canal can finally be reliably sealed and filled.

CanalPro Jeni

Digital assistance system for canal preparation

- Jeni mode continuously adapts to the individual root canal anatomy
- Control of the file movement at millisecond intervals
- Irrigation with aplomb
- Apex locator – measuring length without interruption

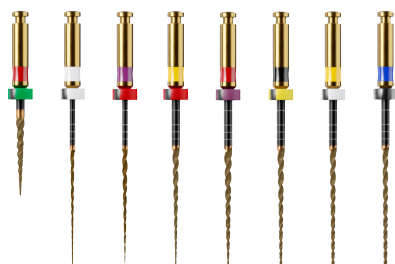
Autonomous "navigation" in the endo canal owing to revolutionary software. Perfectly matched to our file systems. The HyFlex EDM NiTi file system is specifically programmed for use with the Jeni mode.



Jeni – ready – go!

HyFlex EDM

NiTi Files & Accessories



60022705



60019561



60023659

© COLTENE – www.coltene.com

HyFlex EDM Sets	21 mm	25 mm
HyFlex EDM Shaping Set Simple 25/.12; 10/.05; 25/~	60022267	60019363
HyFlex EDM Shaping Set Medium 10/.05; 20/.05; 25/~	60022277	60022278
HyFlex EDM Shaping Set Max Curve 15/.03; 10/.05; 20/.05	60023494	60023495
HyFlex EDM Finishing Set 40/.04; 50/.03; 60/.02	60022268	60019364

HyFlex EDM Refills, 3 pcs	15 mm	21 mm	25 mm	31 mm
HyFlex EDM 25/.12 Orifice Opener	60019596	-	-	-
HyFlex EDM 15/.03 Glidepath File	-	60023493	60023492	60041082
HyFlex EDM 10/.05 Glidepath File	-	60022269	60019594	60041081
HyFlex EDM 20/.05 Preparation File	-	60022275	60022276	60041084
HyFlex EDM 25/~ OneFile	-	60022270	60019595	60041085
HyFlex EDM 40/.04 Finishing File	-	60022271	60019597	60041087
HyFlex EDM 50/.03 Finishing File	-	60022272	60019598	60041088
HyFlex EDM 60/.02 Finishing File	-	60022274	60019599	60041089

HyFlex Accessories	
3 × Endo Practice Blocks, Acryl	60011085

HyFlex EDM Paper ¹ / Guttapercha ² Points	PP ¹ 100 pcs	GP ² 60 pcs
20/.05	60022742	60022706
OneFile 25/~	60022743	60022707
40/.04	60022676	60022708
50/.03	60022741	60022709
60/.02	60022740	60022710
Assortment 20/.05 - 60/.02	60022744	60022705

ROEKO GuttaFlow	2	bioseal
Standard Set 1 × Dual-barrel Syringe, 12 × Mixing Tips, 1 × Mixing Pad	60026870	60019560
Refill Pack 1 × Dual-barrel Syringe	60026871	60019561

CanalPro Jeni	
Complete Set	60023659
1 × Control unit, 1 × Motor with apex measuring contact, 1 × Fully insulated angled handpiece 1:1, 1 × Bluetooth foot switch, 1 × Power supply, 1 × Apex cable set, 1 × Holding bracket for apex cable	

Imprint / Publisher

Coltene/Whaledent AG
Feldwiesenstrasse 20
CH-9450 Altstätten
+41 71 757 5300
info.ch@coltene.com

Sales Contact

Coltene/Whaledent Ltd.
The President Suite
Kendal House, Victoria Way
Burgess Hill, West Sussex
RH15 9NF/UK
+44 1444 235486
info.uk@coltene.com

Service Center

service@coltene.com
00 800 11 0000 12 (UFIN)
Mon.-Fri. 8:00 to 17:00 MESZ

 **COLTENE**