



## BLUE ETCH FLOW

O-phosphoric acid 36%  
Flowable dental etchant

Available packages:

- Syringe 2 ml
- Syringe 10 ml
- Syringe 50 ml
- MONSTER PACK 10 syringes x 2 ml

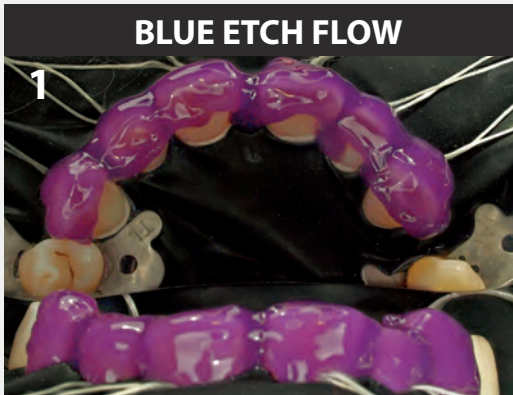


## BLUE ETCH

O-phosphoric acid 36%  
Dental etchant

Available packages:

- Syringe 2 ml
- Syringe 10 ml
- Syringe 50 ml
- MEGA PACK 3 syringes x 10 ml
- MONSTER PACK 10 syringes x 2 ml



## YELLOW PORCELAIN ETCH

Hydrofluoric acid 9,5%  
Porcelain etch

Available packages:

- Syringe 2 ml



## SILAN

Methacrylate silane

Available packages:

- Syringe 2 ml

