

Intensiv Bevelshape

University of Bern, Switzerland

Oscillating diamond files for perfect bevelled edges and preparation margins

A key factor for an ideal cavity preparation for composite fillings, gold inlays and overlays is a precise margin beveling with sharp edges. In the case of prosthetic restorations, the margin finishing of shoulder preparations and the beveling of chamfer preparations are decisive for the quality of the result. The single-side diamond coating helps to prevent iatrogenic damage to adjacent teeth and injury to periodontal tissue.



Product description

- Axially curved files with distally bent ends.
- 3 files diamond-coated over the entire convex working length in grits 40 μ m / 25 μ m / 15 μ m.
- 3 files diamond-coated over the convex distal end only in grits 40 μ m / 25 μ m / 15 μ m.

To be used in combination with Intensiv Swingle, WG-69 LT Cons (with light)

Indications

- Margin beveling for
 - Anterior composites
 - Composite slots
 - Inlays and onlays
- Margin finishing in veneer preparations
- Crown preparations
 - Margin finishing in chamfer preparation
 - Beveling in shoulder preparation

Benefits

- Perfectly polished and clearly outlined profiles with perfect sharp cut edges
- No microfractures and no unforeseen chipping of dental enamel prisms
- Prevention of enamel defects and grooves on the preparation margin
- No iatrogenic damages to adjacent teeth

Intensiv Rootshape

University of Bern, Switzerland

Oscillating diamond-coated files for tissue-sparing root planing

Checking for and removal of soft microbiological plaque, concretions, and filling excesses on the root surface are considered today the essential aspect of the periodontal therapy. The Rootshape files are ideal tools for this type of treatment.



Product description

- Flexible files in two different lengths (11 and 16mm) with spoon-shaped working ends that are diamond coated on their convex side.
- Grits: 40, 15, and 4 μ m.

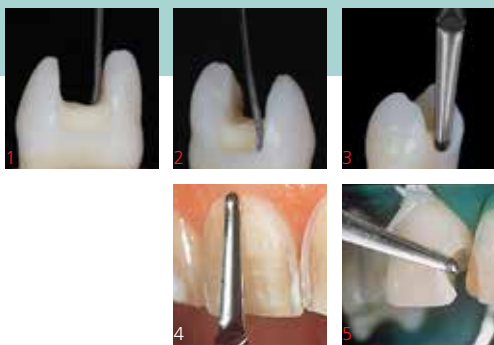
To be used in combination with Intensiv Swingle, WG-69 LT (with light)

Indications

- Supragingival and subgingival plaque removal
- Root planing
- Odontoplasty

Benefits

- Easy access to morphologically difficult areas
- Superior tactile detection of deposits and excesses
- Controlled pressure application thanks to flexible files



1+2) Perfect adaptation of the file to the cavity wall and ground 3) The file allows the bevelling of a cervical shoulder, as well 4) Margin finishing in veneer preparation with BS40 or BS40T 5) Margin bevelling in class IV restorations

Ref. 103										
µm		40	25	15		40	25	15		
514	■	BS40				BS40T				
514	□		BS25				BS25T			
504	■			BS15				BS15T		
		Bevelshape whole length on one side diamond-coated, axially and distally bent					Bevelshape distally diamond-coated (for crown preparations), axially and distally bent			



1) Ideal adaptation of the convex working part to the concave natural root surfaces 2) The length and shape of the file allow the treatment in areas which are morphologically of difficult access 3) The shape of the file ideally adapts to the root surface

Ref. 109									
L mm		11.0	11.0	11.0		16.0	16.0	16.0	
µm		40	15	4		40	15	4	
514	■	RS40				RS40L			
504	■		RS15				RS15L		
484	■			RS4				RS4L	