

**Admira®**

**LIGHT-CURING RESTORATIVE MATERIAL BASED  
ON ORMOCER®S**



## THE ORMOCER® RESTORATIVE SYSTEM

The Admira restorative system is the result of successful Ormocer research, jointly undertaken by VOCO and the Fraunhofer Institute for Silicate Research in Würzburg, Germany (Ormocer = **O**rganic **M**odified **C**eramics). Admira is the world's first Ormocer restorative material and is well established in modern restorative treatment. In combination with the flowable variant Admira Flow and together with Admira Bond, all types of restorations can be placed with high biocompatibility.

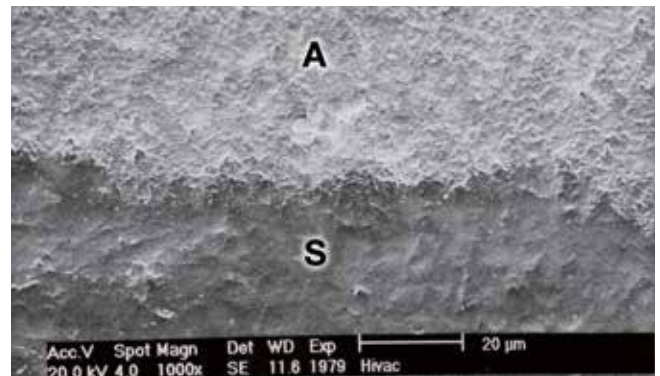
### Ormocer®s

Ormocers consist of a network of large, prepolymerised molecules of an inorganic matrix. This means that the Ormocers, due to their cross-linked, chemical structure, show an even higher biocompatibility than conventional composites. The Ormocer compound molecules also ensure Admira's particularly low shrinkage (1.97 % v/v). The Ormocers offer especially high quality where colour stability is concerned, which guarantees a permanently aesthetic and stable restoration, and therefore a satisfied patient.

### Clinical trials

The durability and quality of Admira restorations has been proven in a variety of in-vivo studies. One study at the University of Bologna examined 100 Class II restorations after three years and evaluated all restorations as "intact and predominantly clinically sound"<sup>1</sup>. A study at the University of Leipzig showed a retention rate of 100 % for Admira Class I and II restorations after two years<sup>2</sup>. A study of the treatment of extensive Class II cavities at the University of Würzburg showed only two failures after two years in a follow-up examination of 83 restorations, which represents a success rate of over 97 %<sup>3</sup>. In addition to this is a study at the University of Istanbul which, given a retention rate of 91 % after two years, evaluated all examined Class V restorations as free of secondary caries<sup>4</sup>. These in-vivo examinations thereby confirm that Admira is also highly suitable as a permanent and aesthetic restoration in molars and premolars.

In a micromorphological study at the University of Dresden, the transitions between the Admira restoration and the tooth enamel were shown to be seamless<sup>5</sup>.



SEM image: The seamless transition between the Admira restoration (A) and the enamel (S) illustrates the excellent bonding of Admira/Admira Bond to the dental hard tissue and confirms the good results of the in-vivo studies.

### Admira® – outstanding aesthetics

Admira is not only highly polishable, it also features impressive natural aesthetics. The two following before and after comparisons show restorations that were optimally treated with Admira.



Source: J. Manhart, 2001

<sup>1</sup> Dondi Dall'Orologio et al; Universität Bologna, 2005, IADR 2005 Baltimore, USA, Abstract # 0582.

<sup>2</sup> Merte et al. Universität Leipzig, 2004, VOCO GmbH.

<sup>3</sup> Denner, Orth, Klaiber und Hugo, Universität Würzburg, Jahrestagung DGZ 2004, Wuppertal, Vortrag # 49

<sup>4</sup> Koray et al. Universität Istanbul, 2004, VOCO GmbH

<sup>5</sup> Klimm et al. Schweizer Monatsschr Zahnmed. 2004; 114(2):104-14.

## Admira® Flow

### THE FLOWABLE VARIANT

With Admira Flow, VOCO also offers a flowable, light-curing restorative material based on Ormocer, which is characterised by good flowability and high material elasticity. The material is highly thixotropic, that is, it flows when applied and handled and is stable when resting. Due to its material elasticity, Admira Flow is suitable as a stress-absorbing lining material, particularly when used in combination with Admira Bond. Admira Flow offers further advantages due to its time saving application and excellent wetting properties.

The flowable composite is equally as biocompatible and resistant to shrinkage as the packable Admira variant. As Admira Flow is highly translucent and its shade matches exactly that of Admira, aesthetic restorations are quick and easy to realise with a combination of both materials.

#### Indications for Admira® Flow

- Restorations with minimally invasive preparation techniques
- Restoration of small cavities
- Extended fissure sealing
- Blocking out undercuts
- Lining or coating cavities (CBF technique, lining technique)
- Restorations of Class III to V cavities
- Repair of restorations and veneers
- Attachment of translucent restorations (e.g. all-ceramic crowns, veneers)

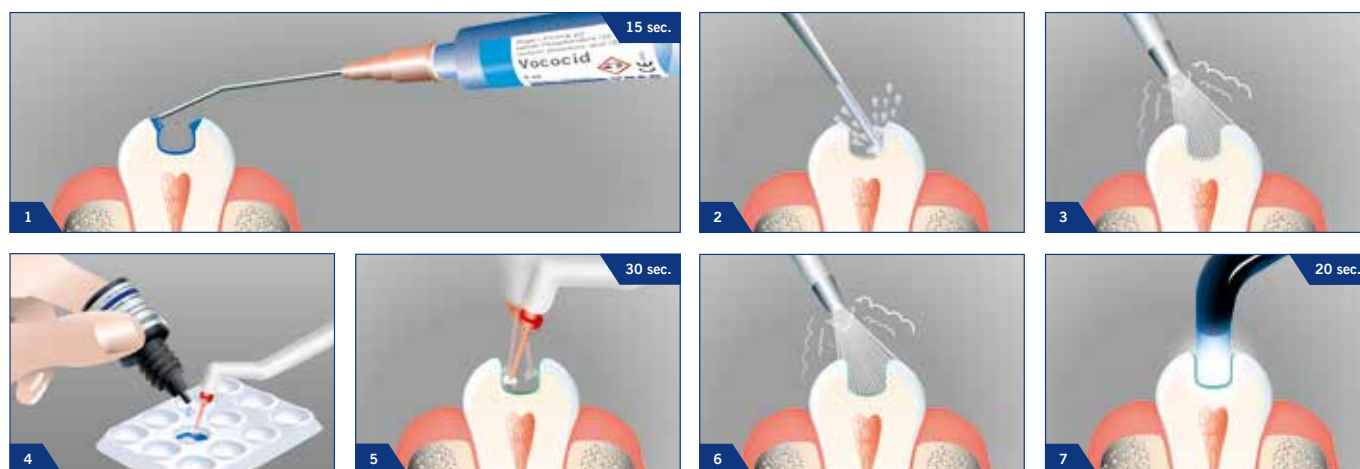
## Admira® Bond

### SECURE HOLD

The universal, light-cured dentine enamel bond is also based on Ormocer research. A strong and stable bond between the restorative materials and the dental hard tissue is essential for a restoration free of marginal deficiencies. Admira Bond

helps to realise this desirable bond. Due to the application of only one single component, Admira Bond is particularly simple and quick to use and, like Admira and Admira Flow, is highly biocompatible.

### APPLICATION



# Admira®

## LIGHT-CURING RESTORATIVE MATERIAL BASED ON ORMOCER®S

### Indications

- Class I to V restorations
- Reconstruction of anterior teeth damaged by trauma
- Facetting on discoloured anterior teeth
- Corrections of shape and colour to improve aesthetics
- Interlocking and splinting loose teeth
- Facet repairs
- Crown build-up restorations
- Composite inlays

### Presentation

#### Admira®

- REF 2420 Set syringe 7 × 4 g (A2, A3, A3.5, B2, B3, C2, OA2), Vococid gel syringe 5 ml, Admira Bond bottle 4 ml, shade guide, accessories
- REF 2419 Set syringe II 7 × 4 g (3 × A2, 3 × A3, 1 × A3.5), Vococid gel syringe 5 ml, Admira Bond bottle 4 ml, accessories
- REF 2431 Set syringe 3 × 4 g (A2, A3, A3.5), Vococid gel syringe 5 ml, Admira Bond bottle 4 ml, accessories
- REF 2439 Shade guide

Shade	Syringe 4 g	Caps 25 × 0.25 g
A1	REF 2421	REF 2451
A2	REF 2422	REF 2452
A3	REF 2423	REF 2453
A3.5	REF 2424	REF 2454
A4	REF 2425	REF 2458
B2	REF 2426	REF 2455
B3	REF 2427	REF 2456
C2	REF 2428	REF 2457
OA2	REF 2430	–
BL	REF 2437	–
I	REF 2429	–

### Product advantages

- Outstanding biocompatibility
- Excellent aesthetics
- Proven over many years
- Non-sticky, sculptable, good marginal adaptation
- Less shrinkage than conventional composites
- Thermal expansion similar to that of dental tissue
- Very good dentine and enamel bonding with Admira Bond
- High abrasion resistance and colour stability
- Ideal for all restoration classes

#### Admira® Flow

- REF 2481 Set syringe 3 × 1.8 g (A2, A3, A3.5), Vococid gel syringe 5 ml, Admira Bond bottle 4 ml, shade guide, accessories

Shade	Syringe 2 × 1.8 g	Caps 25 × 0.25 g
A1	REF 2486	REF 2491
A2	REF 2482	REF 2492
A3	REF 2483	REF 2493
A3.5	REF 2484	REF 2494

#### Admira® Bond

- REF 2432 Bottle 2 × 4 ml
- REF 2479 Bottle 4 ml



VOCO GmbH  
 Anton-Flettner-Straße 1-3  
 27472 Cuxhaven  
 Germany  
 Tel.: +49 (0) 4721-719-0  
 Fax: +49 (0) 4721-719-140  
 info@voco.com  
 www.voco.com

Available from:

