

COXO[®]

Professional Dental Manufacturer

SINCE 2003

C-Fill Mini

Smart · Simple · Efficient





Comparison of the last generation

Size reduce

Weight reduce

30%

20%

More compact,
more humane modeling.

Double-side display
Double-side control
Give you a convenient operation



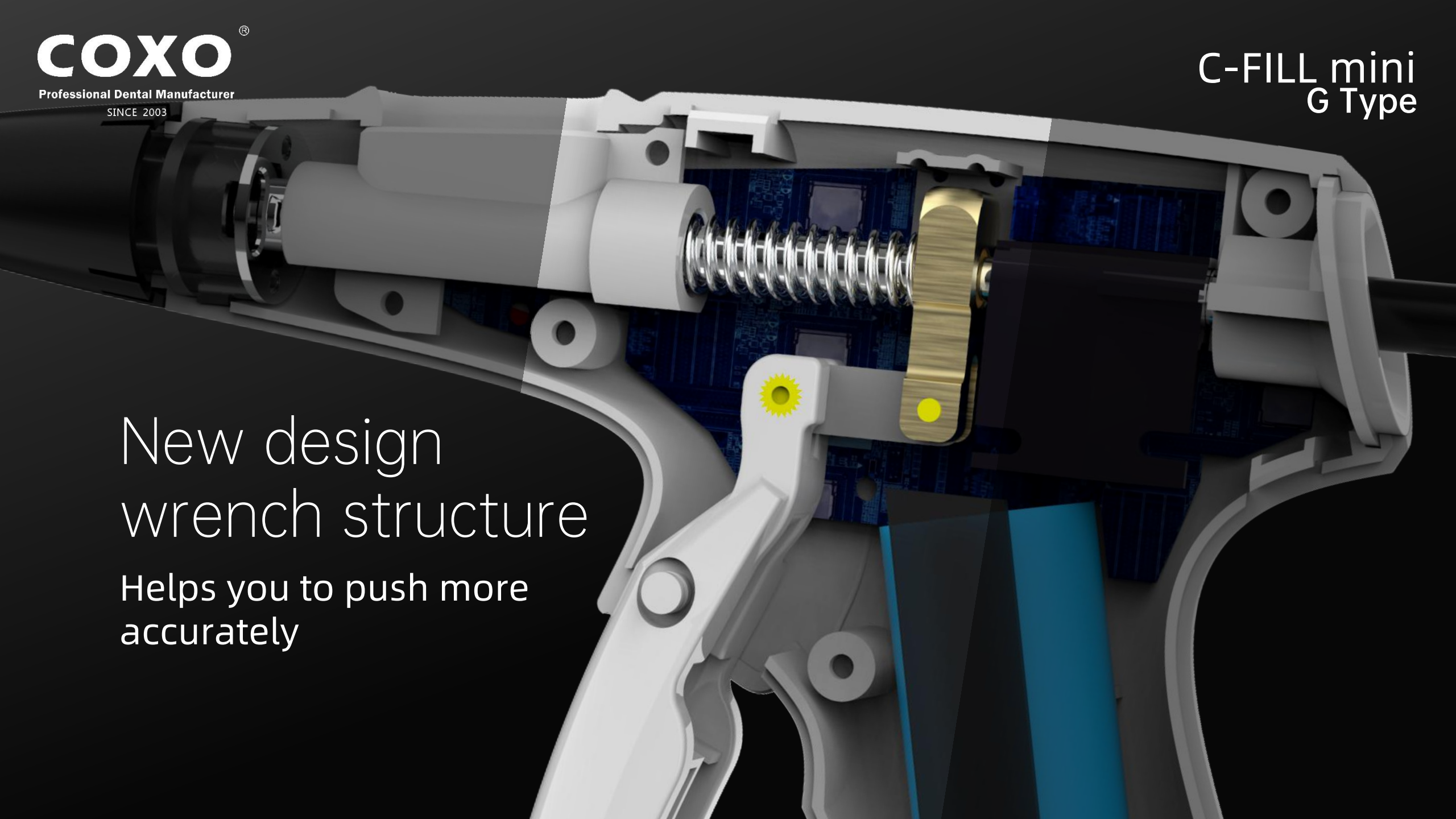
COXO[®]

Professional Dental Manufacturer

SINCE 2003

C-FILL mini
G Type

New design
wrench structure
Helps you to push more
accurately



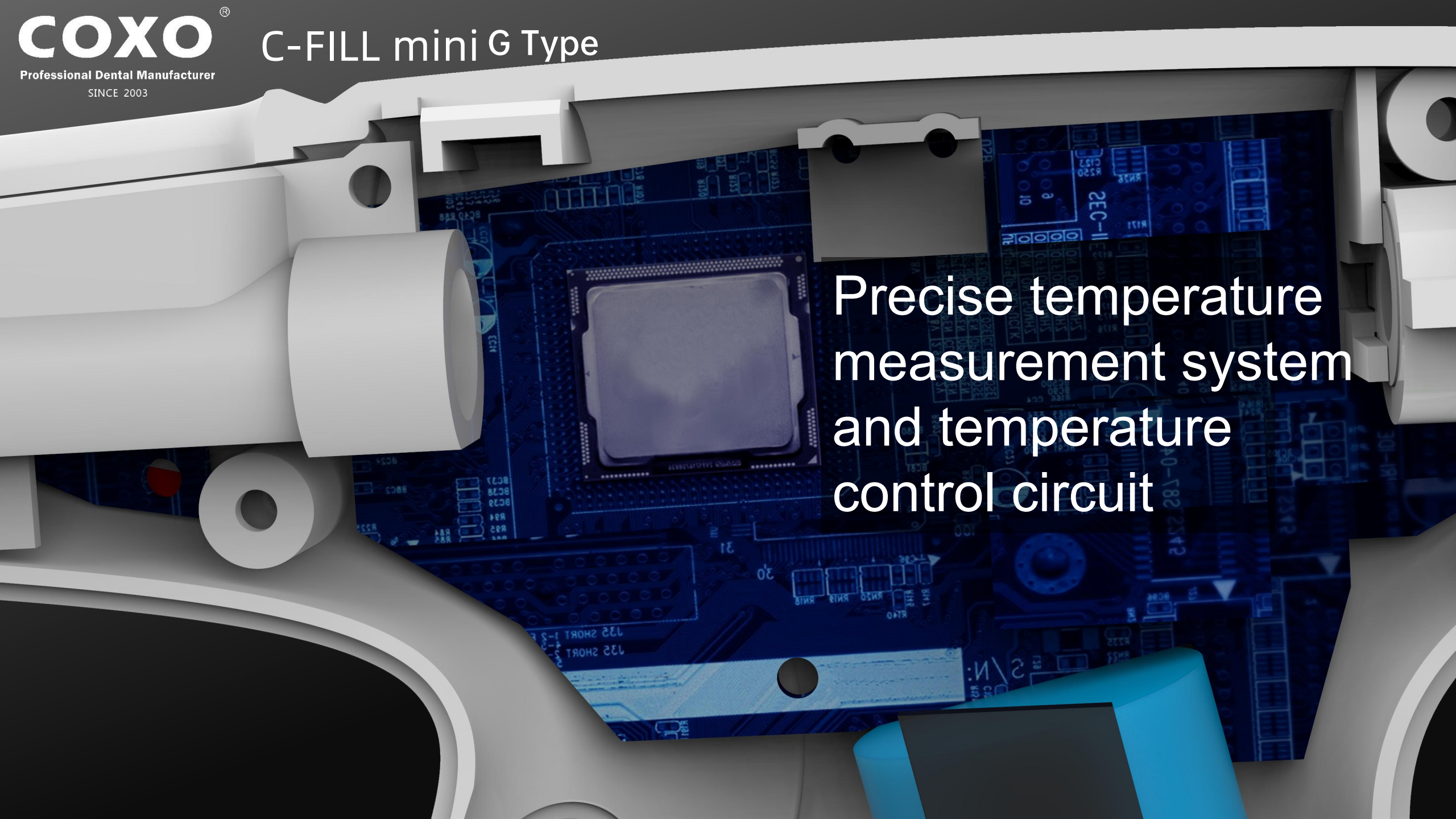
COXO®

Professional Dental Manufacturer

SINCE 2003

C-FILL mini G Type

Precise temperature measurement system and temperature control circuit





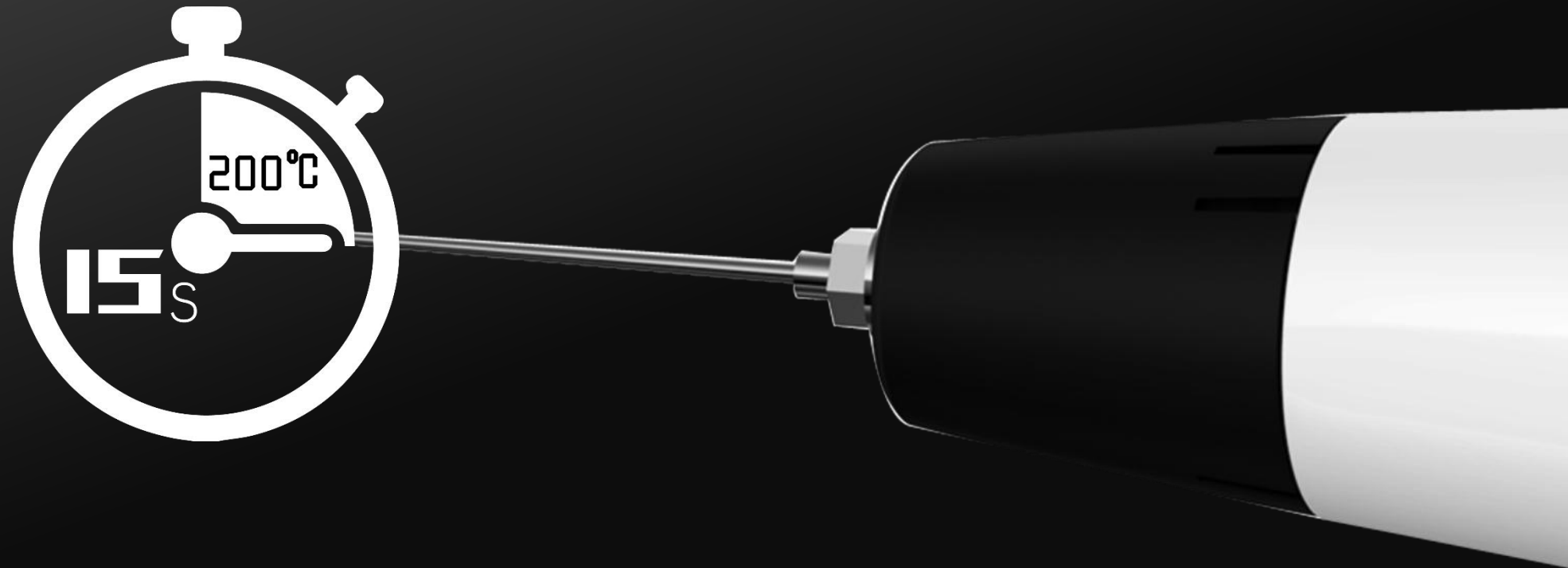
C-FILL mini
G Type

Four
Temperature
settings
For Most of
gutta materials

Suitable temperature setting can perfectly achieve
three-dimensional filling

15s
Reach 200°C

Faster heat time, help you save your time



150 °C Low temperature
standby

- Save power
- Prevent gutta overflow
- Convenient for your work



COXO[®]
Professional Dental Manufacturer
SINCE 2003

C-FILL mini
G Type



2s from 150 °C back
to 200 °C

No need to wait, just take and use!

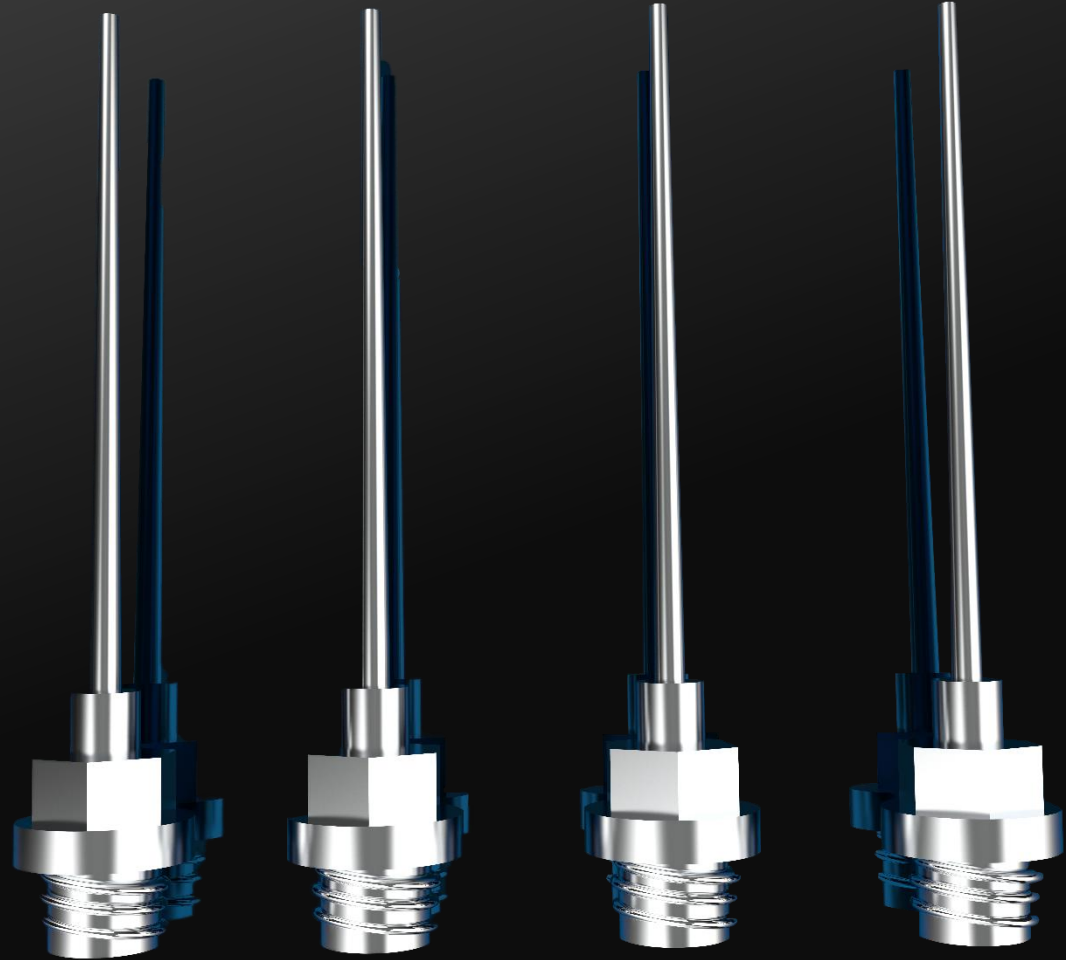
Magnetic suction design

Base with magnet
Absorbing the wrench
Not afraid to lose



More needles

Gauge	Diameter	Length
23ga	0.65mm	23mm
23ga	0.65mm	23mm
25ga	0.55mm	23mm
25ga	0.55mm	23mm



Comparison of the last generation

Size reduce

20%

Weight reduce

40%

More compact,
more humane modeling.



Perfect
balance of
gravity
Give you the
most comfortable
grip



COXO[®]
Professional Dental Manufacturer
SINCE 2003

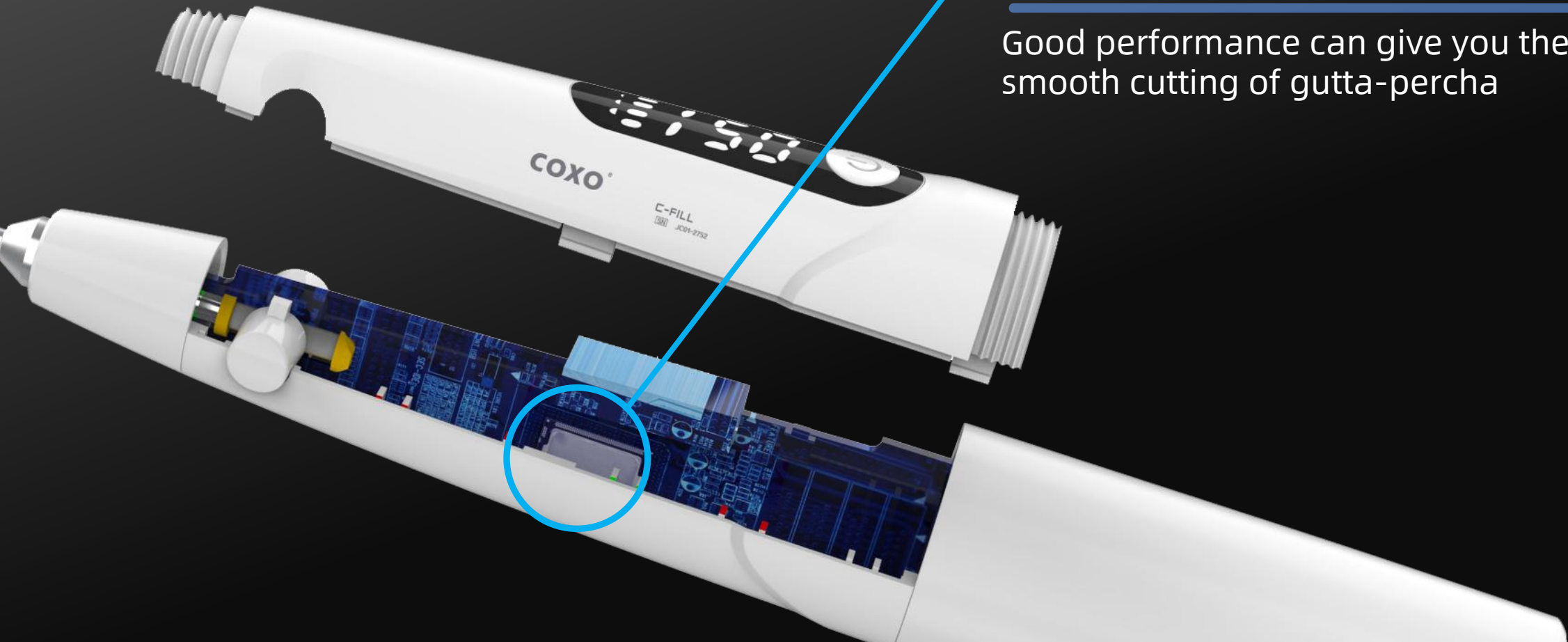
C-FILL mini
P Type



Switchable double-sided
display
Double sided operation

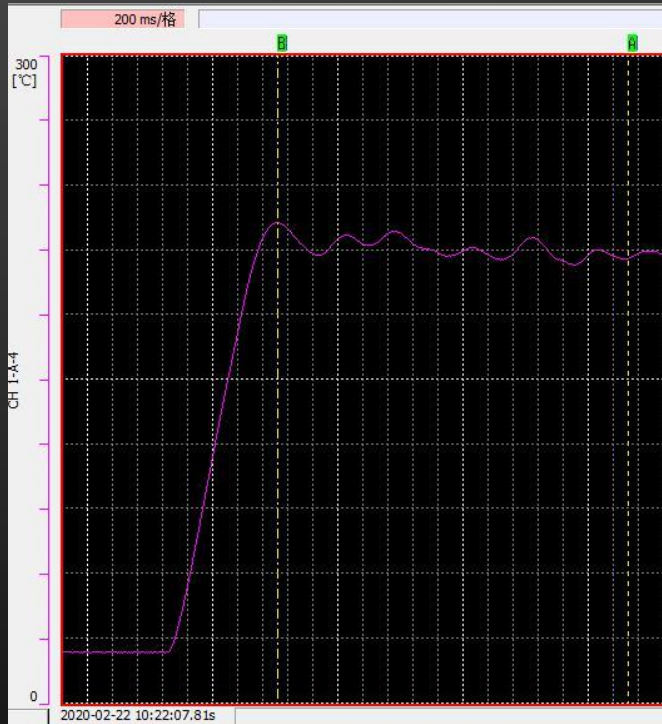
Precise temperature control circuit

Good performance can give you the
smooth cutting of gutta-percha



200 °C Temperature test

C-FILL mini
P Type



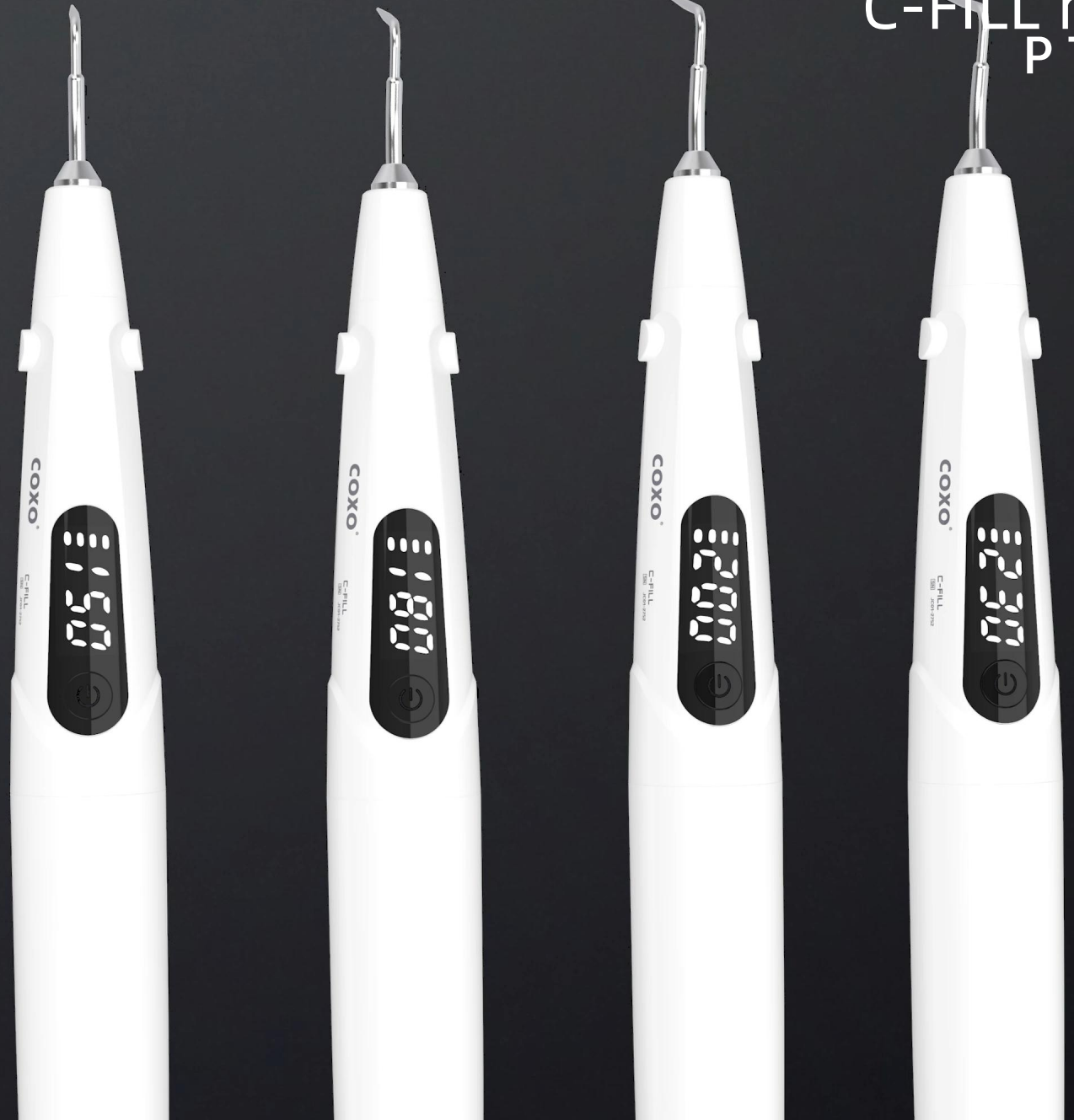
C-FILL mini P type



Other brand

Four Temperature settings For Most of gutta materials

Suitable temperature setting can perfectly
achieve three-dimensional filling



C-FILL mini
P Type

0.5s

Reach 200°C

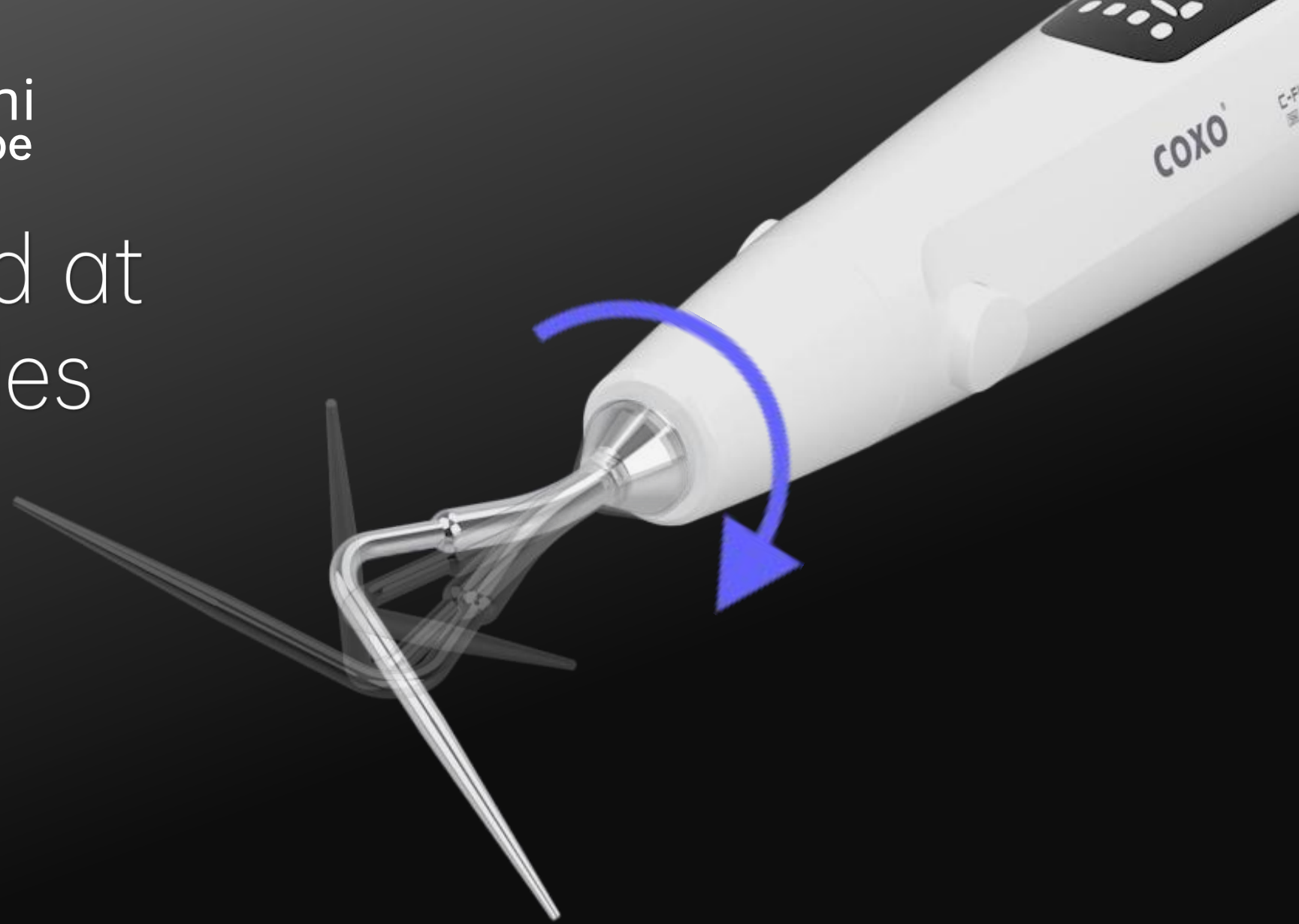
No need to wait, take and use



COXO[®]
Professional Dental Manufacturer
SINCE 2003

C-FILL mini
P Type

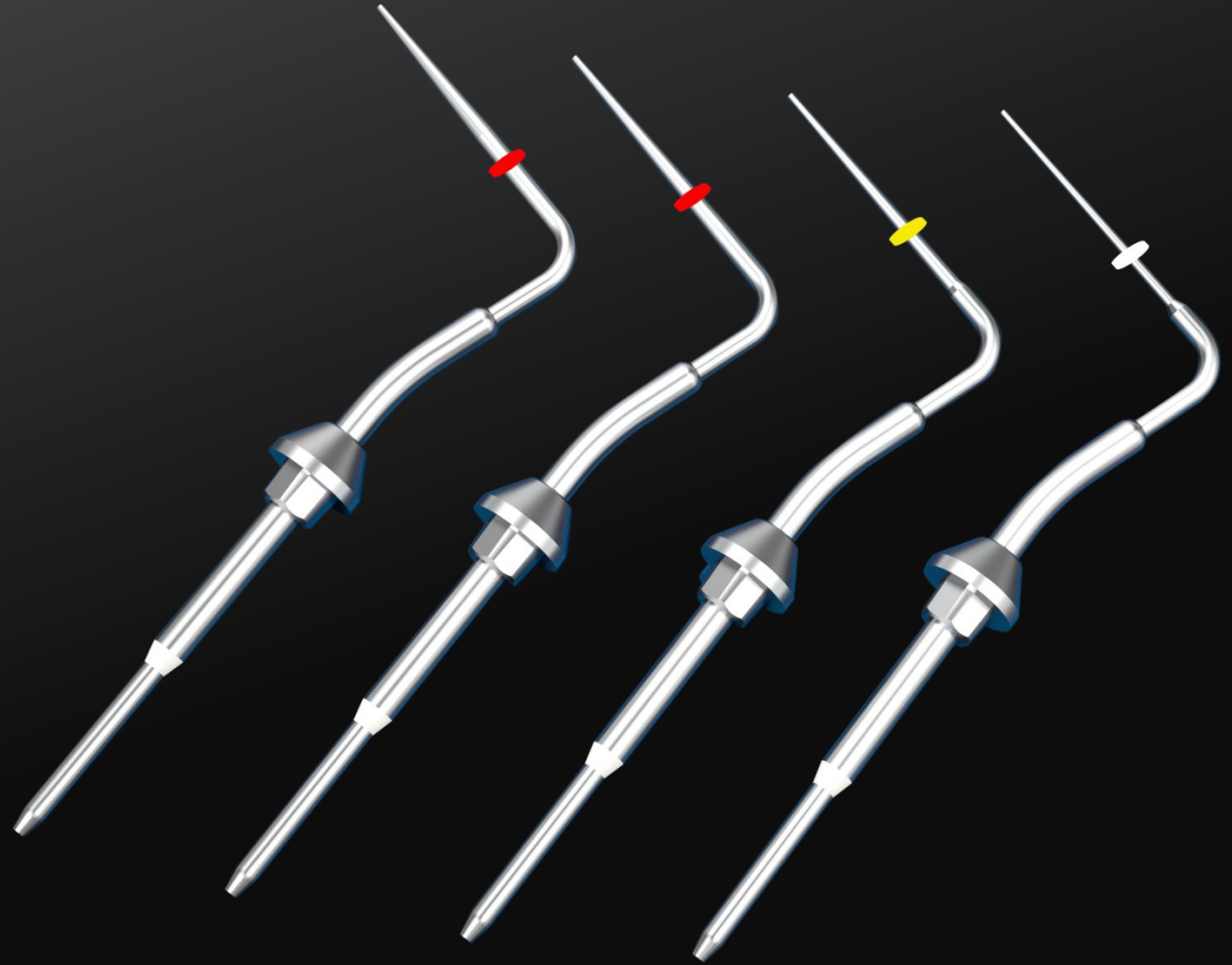
Can be placed at
different angles



Four models of
tip with
different size

Smaller tip of plunger
Can press the effective filling
position

0.02#45	0.04#50
0.06#55	0.08#55



COXO[®]

Professional Dental Manufacturer

SINCE 2003



Size:

L227xW167xH77mm



Accessories

Needles x4

Plunger

Needles bender

Cleaning brush

Gutta percha pellet

Silicone protective case x4

Adapter

User manual x2

Obturation gun

Obturation pen

Charging base x2

Pen tip x4

Thermal protectors cap x2

Prevent overflow rings x10

Parameter

P type

Battery: 2000mAh
Heating time: 4S(With heat protection function, the single heating time is up to 4S)
Working temperature: 150, 180, 200, 230
Adapter: input AC100-240V, output DC5V 1.5A
Use time: 4S 1500times
Plunger specifications: F 45/02, FM 50/04, M 55/06, ML 55/08

G type

Battery: 2200mAh
Heating time: 15S To 200°C
Working temperature: 150, 180, 200, 230
Adapter: input AC100-240V, output DC5V 1.5A
Use time: 10min 15times
Needle specifications: 23G, 25G

COXO[®]

Professional Dental Manufacturer

SINCE 2003

As an international company
We always put innovation and responsibility first

COXO MEDICAL INSTRUMENT CO.,LTD.

Add: Building A4,A Zone,Guangdong New Light Source Industrial Base,

Langsha,Luocun,Shishan town,Nanhai District,

Foshan City,Guangdong Province,China

Tell: +86 757 66692050 Fax: +86 757 81800058

Web: www.coxotec.com

Email: coxotec@gmail.com