



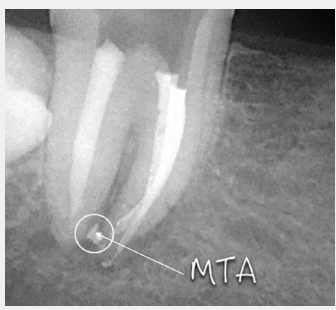
CE
2409

MTA+

Material for filling and rebuilding of root canals

Available packages:

- MINI 3 x 0,14 g MTA+ powder, 1 ml liquid
- MAXI 10 x 0,14 g MTA+ powder, 1 ml liquid



MTA



CE

MTA+ APPLICATOR

Reusable dental tool for handling and application of prepared measure of MTA+ material

Possible variants:

- 0,8 mm
- 1,2 mm



CE

TOOLS FOR HANDLING AND APPLICATION OF MTA+

Reusable dental tools for handling and application of prepared measure of MTA+ material



SET INCLUDES:

SILICONE TRAINING MASS

TRAINING TEETH 5 PCS

SILICONE TRAINING MASS STAND
ALLOWS 3D ROTATION

TRAINING
MTA POWDER 5 g

TRAINING
MTA LIQUID 3 ml



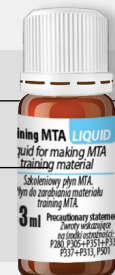
MEASURING CUP
FOR MTA POWDER

SLIDE

PIPETTE FOR
MTA LIQUID APPLICATION

MTA SMART SYSTEM TRAINING SET

Endodontic training set for application MTA



CE
2409

BIO MTA+

Biomaterial for filling and rebuilding of root canals

Available packages:

- MINI 3 x 0,14 g BIO MTA+ powder, 1 ml liquid
- MAXI 10 x 0,14 g BIO MTA+ powder, 2 x 1 ml liquid

TRAINING TEETH



5 variants available

 2633-101-PCL Maxillary first molar 3 canals, 3 roots Perforation of the bottom of the chamber floor, lateral wall perforation of the palatal root	 2111-1A2-PCL Maxillary central incisor 1 canal, 1 root Incomplete root development	 2633-102-PCL Maxillary first molar, 3 canals, 3 roots, perforation of the pulp chamber floor, external apex resorption
 3623-101-PCL Mandibular first molar 3 canals, 2 roots perforation of the pulp chamber floor	 3111-1A1-PCL Mandibular central incisor 1 canal, 1 root, anterior root wall perforation	

Also sell separately!

DRSK
Modified DRSK RCT tooth model