

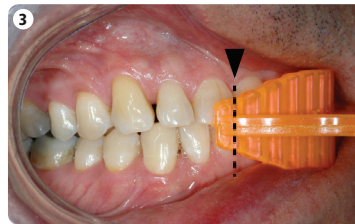
# Colorise Dual Arch technique guide



1 Initial case.



2 Choosing the correct impression tray. Make sure it covers the preparation area.



3 Occlusion practice and reference taking. Ask the patient to close and check there aren't occlusion interference, and mark a reference point.



4 Bleed cartridges and insert the green mixing tip for Colorise Rigid and the yellow one for Colorise Light body.



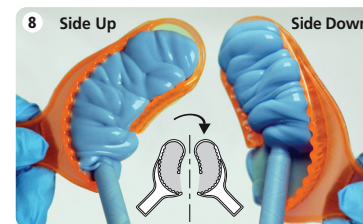
5 Retraction cord insertion.



6 Retraction cord removal.



7 Colorise Light body injection. Start from cervical gingival sulcus towards the occlusal face making sure the tip remains submerged in the silicone.



8 At the same time the assistant fills both sides of the Hi-tray Light Dual Arch with Colorise Rigid.



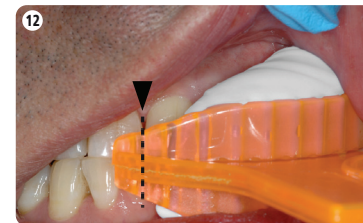
9 Before Colorise Light body turns completely yellow place the tray with Colorise Rigid into the mouth.



10 Insertion of the tray with Colorise Rigid. Make sure the reference point goes to the right position.



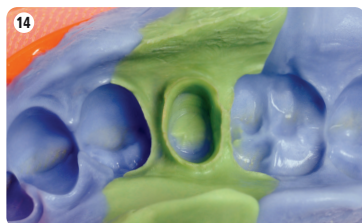
11 Impression taking.



12 Colorise Rigid changes color from blue to white. Remove the impression from the mouth when Colorise Rigid turns white (end of setting time).



13 Impression after removal from the mouth: key registration and antagonist.



14 Impression details.

## colorise rigid

Technical data	
Working time	1' 00"
Setting time	2' 00"

## colorise light

Technical data	
Working time	1' 30"
Setting time	2' 30"