

Ordering Information

Ceram.x Spectra™ ST

Universal Composite Restorative

HIGH VISCOSITY

Compules® Tips Intro Kit (HV) 607.01.570N

24 HV Compules® Tips (Gray) Assorted - (0.25 g each)
(4 x A1; 4 x A2; 8 x A3; 4 x A3.5; 4 x A4)
1 Compules® Tips Gun
i-shade label

Syringe Intro Kit (HV) 607.01.550N

5 HV Syringes (Gray) Assorted - (3 g each)
(A1; A2; A3; A3.5; A4)
i-shade label
1 Bottle Prime&Bond Active™ Adhesive (2.5 mL)
Accessories

Refills (HV)	Compules® Tips	Syringe
Shades	(16 x 0.25 g)	(1 x 3 g)
A1 (= VITA® shades A1; B1; C1)	607.01.571N	607.01.551N
A2 (= VITA® shades A2; B2; D2)	607.01.572N	607.01.552N
A3 (= VITA® shades A3; C2; D3; D4)	607.01.573N	607.01.553N
A3.5 (= VITA® shades A3.5; B3; B4; C3)	607.01.575N	607.01.555N
A4 (= VITA® shades A4; C4)	607.01.574N	607.01.554N
BW (Bleach White)	607.01.576N	

Eco Refills (HV)	Compules® Tips
Shades	(52 x 0.25 g)
A2 (= VITA® A2; B2; D2)	607.01.582N
A3 (= VITA® A3; C2; D3; D4)	607.01.583N

LOW VISCOSITY

Compules® Tips Intro Kit (LV) 607.01.690

24 LV Compules® Tips (Blue) Assorted - (0.25 g each)
(4 x A1; 4 x A2; 8 x A3; 4 x A3.5; 4 x A4)
1 Compules® Tips Gun
i-shade label

Syringe Intro Kit (LV) 607.01.680

5 LV Syringes (Blue) Assorted - (3 g each)
(A1; A2; A3; A3.5; A4)
i-shade label
1 Bottle Prime&Bond Active™ Adhesive (2.5 mL)
Accessories

Refills (LV)	Compules® Tips	Syringe
Shades	(16 x 0.25 g)	(1 x 3 g)
A1 (= VITA® shades A1; B1; C1)	607.01.691	607.01.681
A2 (= VITA® shades A2; B2; D2)	607.01.692	607.01.682
A3 (= VITA® shades A3; C2; D3; D4)	607.01.693	607.01.683
A3.5 (= VITA® shades A3.5; B3; B4; C3)	607.01.695	607.01.685
A4 (= VITA® shades A4; C4)	607.01.694	607.01.684
BW (Bleach White)	607.01.696	

ECO Refills (LV)	Compules® Tips
Shades	(52 x 0.25 g)
A2 (= VITA® A2; B2; D2)	607.01.672
A3 (= VITA® A3; C2; D3; D4)	607.01.673

Compules® Tips Gun 606.65.900

1 Compules® Tips Gun

Ceram.x Spectra™ ST Effects

Universal Composite Restorative

Introductory Kit 607.01.710

28 HV Compules® Tips (Gray) Assorted - (0.25 g each)
(12 x D1; 8 x D3; 4 x E1)
Illustrated Technique Guide
i-shade label

Refills (HV)	Compules® Tips	Syringe
Shades	(16 x 0.25 g)	(1 x 3 g)
D1 (use with A1; A2)	607.01.718	607.01.708
D3 (use with A3; A3.5; A4)	607.01.719	607.01.709
E1 (use with A1; A2; A3; A3.5; A4)	607.01.717	607.01.707

Ceram.x Spectra™ ST flow

Flowable Composite Restorative

Compula® Tips Introductory Kit 607.01.800

24 Compula® Tips (0.25 g ea)
4 shade A1 (= VITA® shades A1; B1; C1)
4 shade A2 (= VITA® shades A2; B2; D2)
8 shade A3 (= VITA® shades A3; C2; D3; D4)
4 shade A3.5 (= VITA® shades A3.5; B3; B4; C3)
4 shade A4 (= VITA® shades A4; C4)
Compules® Tips Gun
i-shade label

Syringe Introductory Kit 607.01.820

5 Syringes (1.8 g each)
(A1; A2; A3; A3.5; A4)
50 syringe tips
i-shade label

Refills	Compula® Tips	Syringe
Shades	(16 x 0.25 g)	(2 x 1.8 g + 25 Syringe Tips)
A1 (= VITA® shades A1; B1; C1)	607.01.801	607.01.821
A2 (= VITA® shades A2; B2; D2)	607.01.802	607.01.822
A3 (= VITA® shades A3; C2; D3; D4)	607.01.803	607.01.823
A3.5 (= VITA® shades A3.5; B3; B4; C3)	607.01.805	607.01.825
A4 (= VITA® shades A4; C4)	607.01.804	607.01.824
BW (Bleach White)	607.01.806	607.01.826
D1 (Opaque Dentin)	607.01.807	607.01.827
D3 (Opaque Dentin)	607.01.808	607.01.828
E1 (Translucent Enamel)	607.01.809	607.01.829

Syringe Tips Refill 607.01.819

50 syringe tips

Ceram.x Spectra™ ST Shade Guide 607.01.561N

1 shade guide holder
9 shade guide tabs
(A1, A2, A3, A3.5, A4, BW, D1, D3, E1)



Ceram.x Spectra™ ST Effects

Complex anterior cases, simplified.

Ceram.x Spectra™ ST

Your most common cases, covered.

Efficient esthetics with Ceram.x Spectra™ ST composites.



Ceram.x Spectra™ ST flow

Efficient esthetic flowable versatility.

To learn more about the Ceram.x Spectra™ ST portfolio, visit www.dentsplysirona.com/CeramxSpectraST-composites

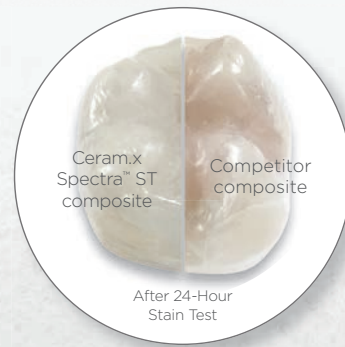
Our decades of innovation in composite materials taught us what matters most to dentists.



Handling



Esthetics



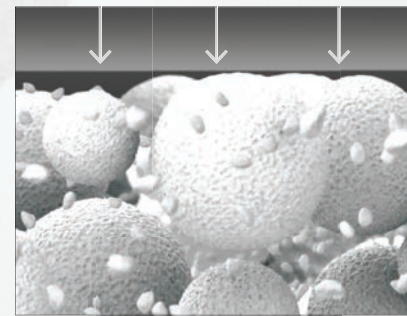
Longevity

SphereTEC® Filler Technology

Ceram.x Spectra™ ST composites excel where it counts thanks to SphereTEC® filler technology.

Key performance advantages of Ceram.x Spectra™ ST composites were made possible with SphereTEC® filler technology. The SphereTEC® fillers' morphology, particle size distribution, and surface microstructure deliver the benefits that matter most to dentists.

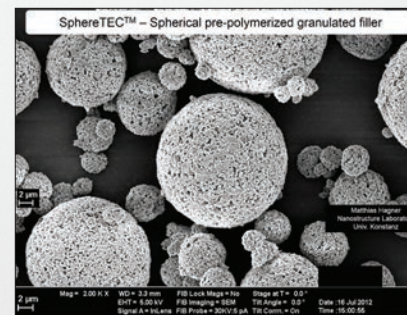
Magnification of a 15 micron diameter SphereTEC® filler particle



Optimized Handling

Easy handling is essential to placement efficiency. The shape and size distribution of SphereTEC® fillers creates a ball-bearing like effect that enables excellent adaptation and sculptability. And they bind more free resin than usual fillers to avoid stickiness.

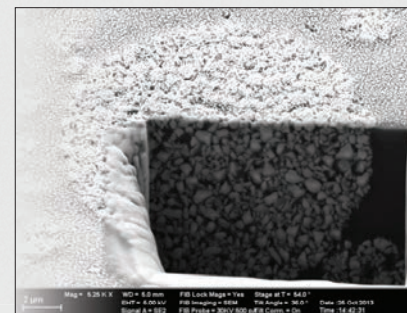
SPHERICAL



Simplified Esthetics

Natural esthetics should be easy to create. SphereTEC® fillers are uniquely constructed to balance opacity, translucency, light absorption, and scattering for an excellent chameleon effect. Their microstructure enables a fast polish to a high gloss.

MICRO-SCALED



Reliable Longevity

Durable results promote profitability and reputation. High filler packing density plus micro-mechanical locking of our resin and fillers deliver material strength and durability. And our resin infiltrated, prepolymerized filler design enables sophisticated stain resistance.

SUPERSTRUCTURES

Simplify every restoration with Ceram.x Spectra™ ST composites featuring SphereTEC® technology

Your most common cases, covered.



Ceram.x Spectra™ ST Universal Composite Restorative

Experience the ease of optimized handling in your ideal viscosity with five universal CLOUD shades that cover the full VITA® range.



Complex anterior cases, simplified.



Ceram.x Spectra™ ST Effects Universal Composite Restorative

Featuring two additional opacities that work together in a simplified layering system with Ceram.x Spectra™ ST's 5 universal CLOUD shades.



Efficient esthetic flowable versatility.



Ceram.x Spectra™ ST flow Flowable Composite Restorative

Versatile flow-on-demand handling with shades perfectly matched to our universal composite portfolio.



1. VITA® is not a registered trademark of Dentsply Sirona.

Your preferred handling

Two Universal Composite Handling Options

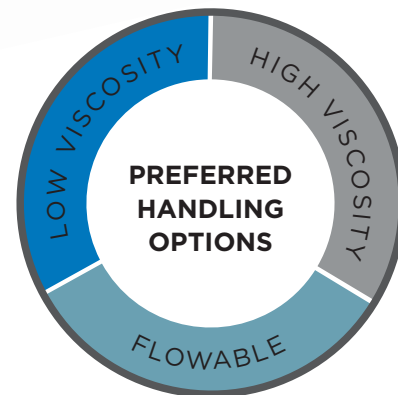
Thanks to SphereTEC® filler technology, Ceram.x Spectra™ ST composite offers optimized handling in a creamy and spreadable low viscosity or a firm and packable high viscosity to accommodate your preference and technique for placement efficiency.

- Doesn't stick to hand instruments
- Adapts easily to cavity surfaces
- Easy to sculpt and shape
- Excellent slump resistance



74%

of dentists complain about handling properties of composites such as adaptability and stickiness.²



Versatile Flowable Composite Handling

For traditional flowable indications in the smile line, Ceram.x Spectra™ ST flow material enables the esthetic performance and durability you expect from a SphereTEC® based composite in flowable form.

- Flow-on-demand handling
- Excellent cavity adaptation
- Stays where placed until instrumentation initiates flow



66%

of dentists use traditional flowables for Class Vs. On average, 1/4 of Class V restorations are in the anterior.³

Simplified esthetics

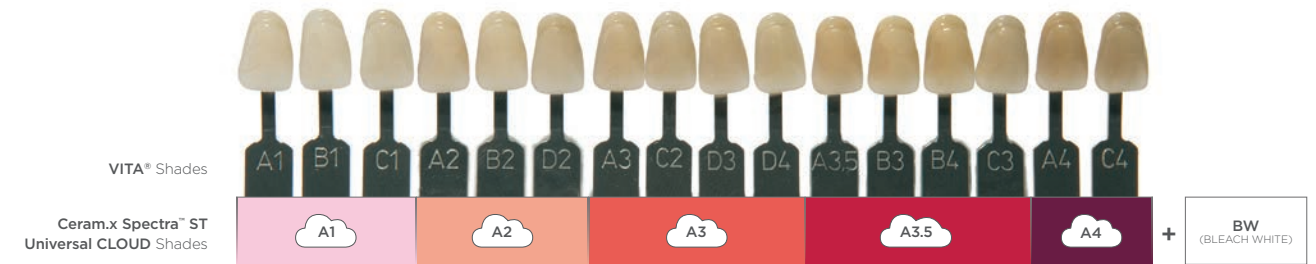
Universal CLOUD shades for common cases

SphereTEC®'s primary filler particles and resin together enable an excellent chameleon effect for simplified shade matching. One universal CLOUD shade is all you need for the majority of cases.

88%

of dentists are stocking more than five VITA® shades.⁴

- 5 universal CLOUD shades cover the full VITA® range
- Reliable, accurate shade match to surrounding tooth structure
- Save money and shelf space by reducing inventory
- BW shade available for bleach white restorations



VITA® is not a registered trademark of Dentsply Sirona.

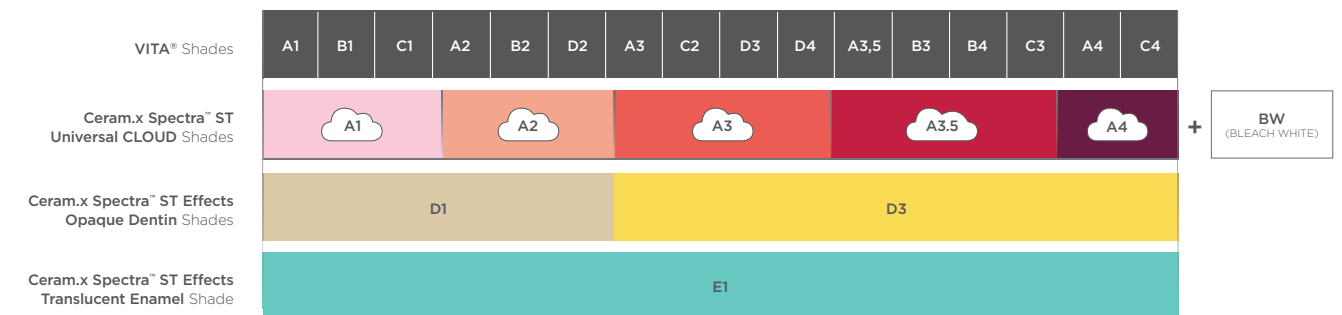
Plus dentin and enamel shades for complex anterior cases

For esthetically demanding anterior cases, Ceram.x Spectra™ ST Effects and Ceram.x Spectra™ ST universal CLOUD shades work together in a simplified layering technique.

Over **1/3**

of clinicians consider color matching to be the most challenging aspect of Class IV restorations.⁵

- Select one of two dentin effects shades for added opacity
- One enamel effect shade for a highly translucent incisal edge
- Simple recipes and technique for advanced esthetic results



VITA® is not a registered trademark of Dentsply Sirona.

2. Dentsply Sirona Restorative, Europe composite user survey 2015, n=297.
3. Dentsply Sirona Flowable Composite user study August 2018.

4. Aegis communications 2016 direct restorative survey (n=107).
5. 2018 The Key Group, Inc.