



roeko Stay-put

Less cord – less time –
perfect preparation line

Less cord – less time – perfect pro

Superior retraction with Stay-put

Time and again dentists are faced with a problem when placing a retraction cord: it is difficult to place in the sulcus and to keep it there.

Stay-put is the answer to this problem.

When you place Stay-put it stays put.

Stay-put impregnated



Stay-put combines the advantages of an impregnated retraction cord with the adaptability of a fine metal filament. The pliable core is so effective that the cord is not only easy to place in the sulcus but it stays there. Overlapping is not necessary. Impregnation with aluminium chloride promotes quick haemostasis without causing any cardiovascular problems.

Saves chair time:

Stay-put impregnated stops bleeding quickly and effectively and does not need to be replaced. Quick, efficient, improved results.

Preparation line

Advantages of Stay-put impregnated

- ensures quick haemostasis
- impregnation without epinephrine
- color coded for easy distinction of sizes
- shows good contrast to the gingiva
- pliable and adaptable
- can be pre-shaped
- easy to place in the sulcus
- does not lift out of the sulcus
- no overlapping required

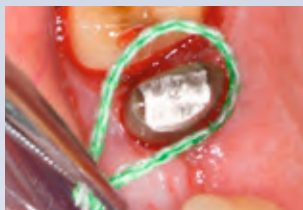


Applying Stay-put is so easy:

Cut a length of Stay-put corresponding to the circumference of the tooth. Overlapping is not necessary.

Place the center of the cord into the sulcus.

Then work out towards the ends of the cord, packing it into the sulcus.



Stay-put impregnated is available in sizes x-fine, fine, medium and thick.

Stay-put non impregnated

The proven non impregnated version. Provides you with the flexibility to impregnate the cords at the time of use to suit the conditions and techniques.



Accessories

Roeko's **Retraction Cord Packers** facilitate placing the retraction cord. Their balanced notches hold the cord in place.



Have you already tried **Comprecap?**

Use Comprecap in combination with Stay-put. Comprecap exerts more pressure onto the retraction cord and the gingival area and stops bleeding naturally by compression. After removal the result is a clean, dry, open sulcus and a well defined margin. Best conditions for a perfect impression.



Comprecap anatomic

Anatomically formed compression caps have semicircled shaped spaces on two opposite sides and can therefore be easily placed on adjacent teeth.



When using Stay-put and Comprecap you'll get best conditions for impression taking with AFFINIS. Impressively free of voids or margin distortions – perfect impressions.

Order information

Stay-put impregnated

x-fine	REF 521 020
fine	REF 521 021
medium	REF 521 022
thick	REF 521 023

Stay-put non impregnated

x-fine	REF 521 000
fine	REF 521 001
medium	REF 521 002
thick	REF 521 003

Comprecap anatomic

	Content	REF
Set (1/3/5)	120 pcs.	531 299
Single sizes		
1	120 pcs.	531 201
3	120 pcs.	531 203
5	60 pcs.	531 205

Comprecap

	Content	REF
Set (1/3/5)	150 pcs.	530 000
Single sizes		
1	120 pcs.	530 008
1	600 pcs.	531 008
3	120 pcs.	530 010
3	600 pcs.	531 010
5	60 pcs.	530 014
5	400 pcs.	531 014

Retraction Cord Packer

smooth	REF 520 000
serrated	REF 520 001

Please contact us for more information or visit our website: www.coltene.com

Coltène/Whaledent AG

Feldwiesenstr. 20
9450 Altstätten/Switzerland
Tel. + 41 71 757 53 00
Fax + 41 71 757 53 01
info.ch@coltene.com

Coltène/Whaledent Inc.

235 Ascot Parkway
Cuyahoga Falls
Ohio 44223/USA
Tel. + 1 330 916 8800
Fax + 1 330 916 7077
info.us@coltene.com

Coltène/Whaledent

GmbH + Co. KG
Raiffeisenstraße 30
89129 Langenau / Germany
Tel +49 7345 805 0
Fax +49 7345 805 201
info.de@coltene.com

 **COLTENE®**